

Homeless Headlines

A publication of the Illinois Association of Community Action Agencies, 3435 Liberty Drive, Springfield, Illinois 62704 - (217) 789-0125

APRIL 2011

VOLUME 21, ISSUE 4

New Moms: Supportive Housing for Young Parents

New Moms is located in the Austin neighborhood of Chicago. The program serves a population that is highly at-risk-overlooked, underserved, and underfunded. Most often, participants arrive at New Moms with nothing more than a baby in their arms and a trash bag full of their belongings. Ninety-seven percent are either Latino or African-American, between the ages of 13 and 21, with children 5 years old or younger. When these young women come to us, approximately 80 percent have dropped out of school, and are operating at an average 4th grade educational level. Only about 25 percent have ever held a job. Almost all are multi-generational



welfare recipients, or have no income at all. One hundred percent are living in extreme poverty (200 percent or more below the poverty threshold). Over 75 percent do not live with immediate family members. Most have no permanent home, and report “couch

surfing” from one potentially dangerous, transient living situation to another, children in tow. Many are officially homeless, living on the streets with their children. Most are survivors-or continuing victims-of abuse, neglect, abandonment, sexual exploitation, and domestic violence.

The volatile, dangerous environment in which these teenage mothers live not only cripples their lives and futures-but also those of their children; who are: 3 times more likely than non-homeless children to be placed in remedial education; 4 times more likely to be abused, neglected, or abandoned; 4

(Continued on page 2)

Out of Reach 2011 Study Released

The National Low Income Housing Coalition will release Out of Reach 2011 on Monday, May 2 at 12:30 pm EDT. This annual report contains a side-by-side comparison of wages and rents in every county, Metropolitan Area, combined nonmetropolitan area and state in the United States.

Out of Reach 2011 again includes the calculation of the Housing Wage: the amount a person working full-time must earn to afford the Fair Market Rent on a modest two-bedroom unit. Out of Reach also calculates the number of

hours one must work at the minimum wage and the average renter wage in order to afford typical rents. In addition, the report provides local wage and income data for comparison purposes.

Today more than 38 million households rent their homes, 1.9 million more than in 2007. The current rate of homeownership (66.5 percent) is now at the lowest level since 1998. And with the foreclosure crisis and recession on the one hand and the aging of the baby boom and the coming of age of the

(Continued on page 7)

Inside Headlines

- 3 Housing Counseling Program Eliminated
- 3 Making the Connection
- 4 HUD Funds New Homeless Assistance Programs
- 4 Demand for Affordable Rental Housing Rising
- 5 FY 2011 SNAP Participation Grants
- 5 2011 NAEH Conference Agenda
- 8 Headlines Directory

Homeless Headlines on the Internet - The Illinois Association of Community Action Agencies publishes both Homeless Headlines and Homeless Hotline on its web site at www.iacaanet.org under Media. To receive both by email, send a blank email to: headlines-hotline-subscribe@yahoo.com. (Self service only.)

Illinois Department of
Human Services



Homeless Headlines

New Moms

(Continued from page 1)

times more likely to drop out of school; at high risk of serious health problems; and at an 80 percent risk of continuing the cycle of poverty in which they grew up. In fact, research has shown that, without intervention, 80 percent of the sons of teenage mothers will become incarcerated by age 19, and 70 percent of the daughters will themselves become mothers by age 16.

The Transformation Project

The Transformation Project will include a new and expanded facility campus, which will comprise over 48,000 square feet of supportive housing, community, and office space.



Mayor Richard M. Daley (Chicago) and Audalee McLoughlin (President and CEO of New Moms) at groundbreaking

During the last 5-7 years, three of New Moms target neighborhoods (Humboldt Park, West Town, and Logan Square) have begun to gentrify, resulting in a rapid relocation of families in poverty - including the young moms we serve. The Transformation Campaign will provide New Moms with a new campus, which will allow us to shift their physical location further west to the Austin neighborhood, where many of New Moms participants are able to afford housing. Austin remains an

economically distressed neighborhood with a median household income of \$29,054; and median net worth of \$29,231. Less than 50 percent of the community are high school graduates.

The apartments will be developed to replace housing destroyed by a fire in 2008. While New Moms continued to provide housing after the fire, the organization will nearly double its capacity with the new development. Built on a vacant site that formerly housed a Chicago police station, the apartments will include a day care center and supportive services for the parents. An additional \$114,274 grant through the Illinois Department of Commerce and Economic Opportunity will help the developers include energy-efficient features. Other funding sources include a \$4.1 million zero-interest loan through the City of Chicago.

This new facility will also provide New Moms with the space to nearly double our residential capacity to 40 moms and 72 children by the year 2012; and double our non-residential capacity to 100 moms and their children. In the new facility, New Moms will also have the capacity to expand the types of services offered to better meet the growing needs identified among the adolescent parent population: Extended Care - increasing the length of service from 6 to 36 months; Infant Mental Health - reducing child abuse and neglect; D. A. D. S. - programming for teen fathers; a Licensed Daycare Center - open 2 shifts and providing care for sick children as well as home for New Moms social enterprise, Bright Endeavors.

The State of Illinois has invested \$6.2million in Federal Stimulus Funds to build the Transformation Project. The project will create forty units of permanent supportive housing for formerly homeless young parents. The housing will be built in Chicago as a result of the financial investment of the

(Continued on page 6)

Homeless Headlines by email

This is self-service only. If you would like to receive Homeless Headlines by email, send a blank email to headlines-hotline-subscribe@yahoo.com. When the confirmation message comes, just click on the reply and send buttons in your email program. If your address changes, unsubscribe (headlines-hotline-unsubscribe@yahoo.com) and submit a new subscription.

Homeless Headlines on the IACAA Web Site

The current issue of Homeless Headlines and back issues are available at www.iacaanet.org/homelessheadlines/.

Homeless Headlines



Chairperson, Kris White
President & CEO,
Dalitso Sulamoyo
Editor, Allan Timke
atimke@iacaanet.org

The Illinois Association of Community Action Agencies has published the monthly *Homeless Headlines* and the *Homeless Hotline* since 1991 under contract with the Illinois Department of Human Services.

For a free subscription, contact:

Illinois Association of Community Action Agencies
3435 Liberty Drive
Springfield, Illinois 62704
Telephone: (217) 789-0125
Fax: (217) 789-0139
www.iacaanet.org

Housing Counseling Program Eliminated

The federal Housing Counseling program was eliminated in Congress' final Continuing Resolution for FY2011.



The elimination of funding for the Housing Counseling program in H. R. 1473 took advocates by surprise. The program has historically received bipartisan Congressional support and its importance in mitigating impacts of the foreclosure crisis for low income families is widely recognized.

The National Council of La Raza, the NAACP, the National Coalition for Asian Pacific American Community Development, and the National Urban League issued a joint press release criticizing Congress' decision to defund the program.

HUD issued a Frequently Asked Questions (FAQ) document on the Housing Counseling program to

clarify how the program cut will be implemented. (www.nlihc.org/doc/FY11-Housing-Grant-Cuts-FAQ.pdf) Agencies receiving housing counseling funding are currently drawing down funds for services from FY10 awards. The CR does not affect FY10 funding and agencies can continue to draw those funds for the remainder of the fiscal year. The FAQ states that, beginning October 1, 2011, there will be no funding available for housing counseling or training activities. HUD hopes to provide the \$88 million in FY12 Housing Counseling funds included in the President's budget request. If FY12 funding is appropriated by Congress, there will be a gap in funding lasting between the start of the fiscal year and the time HUD is able to issue a NOFA and award FY12 grants. ■



Making the Connection No Wrong Door

By Kathryn Nelson



The authors of this column welcome your comments and questions. See contact information at the end of the article.

As of January 2011, a new door opened at IDHS' Family Community Resource Centers (FCRC). Actually it is what they call "No Wrong Door". The "No Wrong Door" policy allows you to apply for benefits such as Medicaid, SNAP (Supplemental Nutrition Assistance Program/Food Stamps), TANF (Temporary Assistance for Needy Families) or AABD Cash benefits at any IDHS

FCRC office. This means you can apply at any office not just the office that serves the address where you live. IDHS is calling this the Office of Choice of option. There are a number of advantages to the Office of Choice option:

- ⊙ It may be beneficial to use the office near where you work making it more convenient to drop off or pick up information during office hours
- ⊙ It may be easier to use an office near your children's day care center
- ⊙ If you are a survivor of abuse picking a different office could make it less likely that your abuser would know where to try to attempt to obtain information or try and locate you
- ⊙ You actually live closer to another IDHS office in another part of the city or in another county

These are examples of just a few of the reasons you may want to exercise the Office of Choice option and select a different office. The ways you can select a different office are:

- ⊙ When completing the application for benefits, you can now complete a section that indicates the Office of Choice. If you make no selection then the application is sent to the office that serves your zip code. You will not be given the option to select an Office of Choice if you reside in a Long Term Care or Supportive Living facility, or the application is made for someone in the hospital.
- ⊙ If you already receive benefits you can contact the office that currently has your case and tell them which office you want to use
- ⊙ You can go into the Office of Choice and ask them to

(Continued on page 7)

HUD Funds New Homeless Assistance Programs

U.S. Housing and Urban Development Secretary Shaun Donovan on April 28 that it had awarded more than \$216 million to nearly 700 new homeless programs across the country. The grants announced today are \$26 million more than last year's grants and, combined with renewal funding announced earlier this year, represents the most homelessness assistance ever awarded by HUD. HUD is also continuing to confront rural homelessness by targeting a record \$16.4 million to 87 never-before-funded programs in less populated areas of the country. For details on the \$7,315,717 awarded to Illinois agencies, go to http://portal.hud.gov/hudportal/documents/huddoc?id=10_illinois_new.pdf.

In January, HUD awarded more than \$1.4 billion in Continuum of Care grants to renew funding to 7,000 existing local homeless programs. (See January issue

of *Homeless Headlines*.) The funding announced today will invest in local projects which have never before received HUD homeless funds, providing critically needed housing and support services to an estimated 21,000



homeless individuals and families. Though homelessness is largely an urban phenomenon, HUD is reserving record funding to meet the unique challenges faced by homeless individuals and families living in rural areas.

HUD's Continuum of Care grants fund a wide range of transitional and permanent housing programs as well as supportive services such as job training, case management, mental health counseling, substance abuse treatment and child care. Street outreach and assessment programs to transitional and permanent housing for

homeless persons and families are also funded through these grants. Continuum of Care programs include:

Supportive Housing Program (SHP) offers housing and supportive services to allow homeless persons to live as independently as possible. Shelter Plus Care (S+C) provides housing and supportive services

on a long-term basis for homeless persons with disabilities, (primarily those with serious mental illness, chronic problems with alcohol and/or drugs, and acquired immunodeficiency syndrome (AIDS) or related diseases) and their families who were living in places not intended for human habitation (e. g., streets) or in emergency shelters. Single-Room Occupancy Program (SRO) provides rental assistance for homeless persons in one-person housing units that contain small kitchens, bathrooms, or both. ■

Demand for Affordable Rental Housing Rising

The Joint Center for Housing Studies at Harvard University (JCHS), recently released a report entitled "America's Rental Housing: Meeting Challenges, Building on Opportunities." According to the study, renter incomes are not keeping up with the rising costs of housing and utilities. Since 1980, real rents in large metro areas have increased 15 percent. Yet, real renter incomes are now below 1980 renter income levels.

The divergence of rents and incomes has been particularly pronounced in the past decade. While rents stalled during the most recent recession, they are once again on the rise, with a 2.3 percent increase in the last quarter of 2010. Renter incomes have not shown any indication of increasing.

Long term analysis of renter cost burdens demonstrates the growing struggle that emerges from these divergent trends. In 1960, 44 percent of renters in the bottom quintile faced a severe housing cost burden, defined as paying over 50 percent of their income towards rent. By 2009, 61 percent of renters in the bottom income quintile faced such a burden. In Chicago the share of severely cost-burdened renter households rose from 20.4 percent in 2000 to 28.6 percent in 2009.

The incidence of unaffordable housing cost burden among moderate income households is also on the rise. Over the last decade, the percentage of middle income households paying over 30 percent of their income for rent doubled.

Overall, while only 24 percent of renters paid over 30 percent of their income towards rent in 1960, by 2009 49 percent of renters were in this predicament.

While part of the story is declines in incomes, the report also confirms that there is an insufficient supply of affordable rental homes available to meet the need among the lowest income households. Over 28 percent of the most affordable, unassisted rental homes have been lost since 1999 and the current supply of seven million assisted rental homes can only serve approximately a quarter of all renters eligible for federal housing assistance. The authors estimate that since 1995, 700,000 homes with assistance attached to them have been lost.

(Continued on page 6)

FY 2011 SNAP Participation Grants



The purpose of this grant competition is to support efforts by State agencies and their community-based and faith-based partners to develop and implement:

Simple SNAP application and eligibility determination systems; or Measures to improve access to SNAP benefits by eligible applicants.

This RFA seeks diverse proposals that would make the entire process, from certification to recertification, easier and more efficient for applicants and participants. Grant proposals should focus on improving the quality and efficiency of operations and processes within the SNAP office that improve the ability of applicants to access benefits. Specifically, FNS is interested in initiatives that make it easier for applicants to apply for benefits, improve application processing timeliness for initial applications and re-certifications, and reduce churning.

We encourage potential applicants to carefully read the five review criteria listed in the RFA. These criteria outline the qualities FNS expects successful proposals to have; they will also guide the reviewers' evaluation of proposals.

Difference between the Program Participation Grants and the Outreach Grants

Improving access differs from performing outreach. To understand these differences, we encourage you to read the paragraph under the heading "Difference between the Program Participation Grants and the Outreach Grants." Over the years grants have supported strategies that have improved access, timeliness and accuracy. For example, FNS has funded web-based systems, online benefit tools, call centers and technology (such as document imaging). Grant proposals should not be made for the ongoing costs of carrying out any project. The proposal should be new to the locality.

Program participation grants support projects that make it easier for applicants to go through the process to receive SNAP benefits. Access activities may include new technology, business process re-engineering, or increasing the number of ways in which applicants can submit their applications. This may include out-stationing an eligibility worker who can provide application assistance, perform the interview and actually submit the application to the State agency. Whereas outreach initiatives strive to increase SNAP participation by marketing the program, providing application assistance, and expanding the range and number of places people can go to get information and assistance with their SNAP

applications. Because "application assistance" can be both outreach and access, it is important that the proposal distinguish between the two.

Application assistance in its purest form is when an individual helps an applicant fill out an application. This is outreach. When the assistance goes beyond helping someone fill out the application and includes helping someone actually get the application to the office it becomes access. For example, when a volunteer helps an applicant fill out an online application that is then submitted directly to the State agency that is access. Program Participation Grants do not support projects that devote more than 25 percent of the requested grant funds to outreach activities, such as advertising, pure application assistance, screening/pre-qualifying applicants - or whose purpose is to attract or recruit SNAP applicants.

The entities eligible to receive grants under this competition are:

The 53 State agencies that administer SNAP1; State or local governments ; Agencies providing health or welfare services ; Public health or educational entities ; and Private non-profit entities such as community-based or faith-based organizations, food banks, or other emergency feeding organizations.

For access to a synopsis, the full notice, and the grant application, go to www.grants.gov/search/basic and search for Catalog of Federal Domestic Assistance (CFDA) number 10.580. ■

2011 NAEH Conference Agenda

A tentative agenda for the National Conference on Ending Homelessness is now available online. Workshops will focus on a variety of topics including: Basics of the HEARTH Act, Serving Homeless Veterans, Collaborating with Schools to Serve Children and Youth, Progress on



Policy Priorities in Congress and Sustaining Your HPRP Funded Programs.

To view the agenda, go to <https://help.endhomelessness.org/events/17/agenda> ■

New Moms

(Continued from page 1)

Illinois Housing Development Authority (IHDA).

On April 25, 2011, IHDA Executive Director Mary R. Kenney joined Mayor Richard M. Daley and other local officials to celebrate the groundbreaking of the Transformation Project apartments at 5353 W. Chicago Ave. in the Austin neighborhood.

On behalf of the administration of Governor Pat Quinn, IHDA financed \$6.2 million in federal Neighborhood Stabilization Program (NSP) grants to build the development. Statewide, IHDA has invested \$53.1 million in NSP

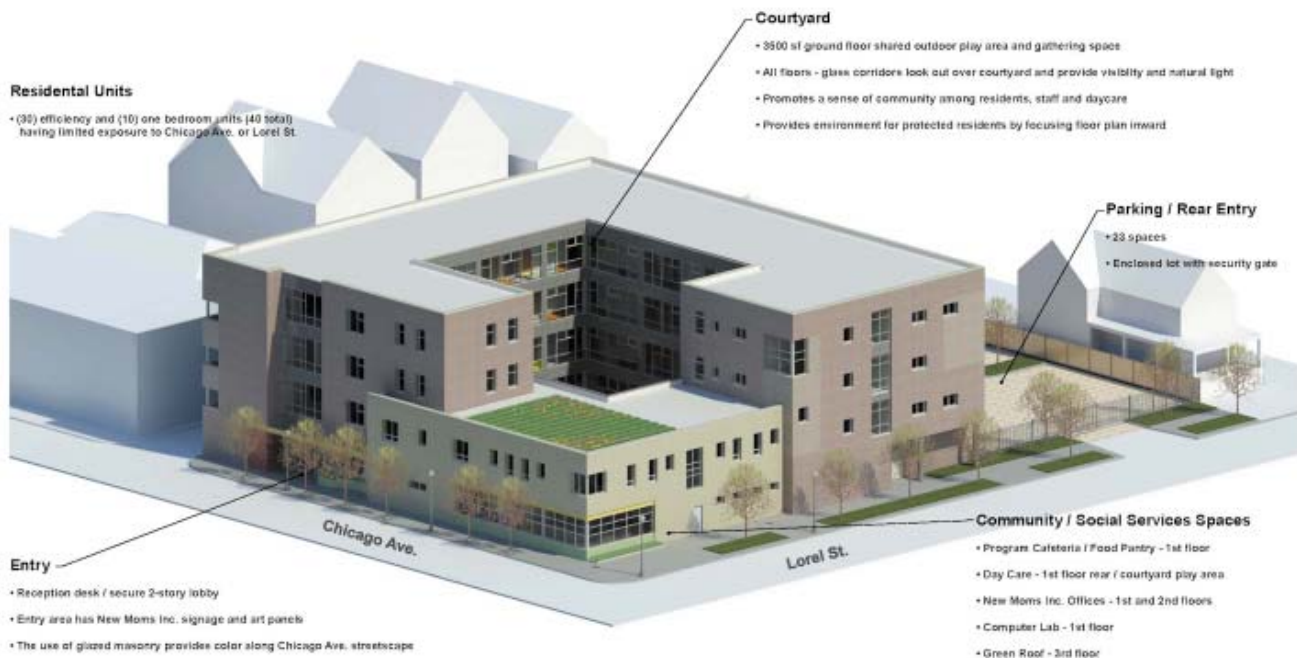
funds for the acquisition, rehabilitation, demolition and redevelopment of vacant, foreclosed or abandoned properties to help low-, moderate-, and middle-income households and communities. A list of developments is available at ihda.org.

“The Transformation Project demonstrates how federal Neighborhood Stabilization Program (NSP) funds available through the State of Illinois are filling the critical need for affordable housing, and creating construction jobs statewide,” said Kenney. “These federal dollars are working to help stabilize communities distressed by foreclosures and abandonment.”

“The federal resources available through the Illinois Housing Development Authority (IHDA) will allow us to build a new development to serve the needs of adolescent parents who otherwise would have nowhere else to go,” said New Moms President Audalee McLoughlin. “Such supportive housing is key to making sure they have access to secure and affordable housing and services as they continue on the path to self-sufficiency.”

Construction is scheduled to be completed by August 2012.

For more information, contact New Moms at (773) 252-3253. 📍



McBride
Kelley
Bauer

Aerial View from Northwest
DECEMBER 11, 2009

NEW MOMS, INC.
Changing the Future For Teen Moms

Demand Rising

(Continued from page 4)

According to the report, the rental market is poised to become increasingly tight in future years and the shortage of affordable homes will worsen. Due to declines in homeownership nationwide, the number of renter households is rising. The number of renter households grew

by almost four million between 2005 and 2010. Researchers at JCHS estimate that the number of renter households will likely increase by between 360,000 and 470,000 annually over the next decade.

The report concludes that with the number and the share of renters likely to grow, it is necessary that we identify

and promote policies to preserve and expand the supply of affordable rental housing today.

To access the study, visit the Joint Center for Housing Studies at www.jchs.harvard.edu/publications/rental/rh11_americas_rental_housing/index.html 📍

Out of Reach 2011

(Continued from page 1)

echo boom on the other, the demand for rental housing is only projected to grow. Out of Reach is a side-by-side comparison of wages and rents in every county, Metropolitan Area (MSAs/HMFAs), combined nonmetropolitan area and state in the United States. For each jurisdiction, the report calculates the amount of money a household must earn in order to afford a rental unit in a range of sizes (0, 1, 2, 3, and 4 bedrooms) at the area's Fair Market Rent (FMR), based on the generally accepted affordability standard of paying no more than 30 percent of income for housing costs. From these calculations the hourly wage a worker must earn to afford the FMR for a two-bedroom home is derived. This figure is the Housing Wage.

Illinois

In Illinois, the Fair Market Rent (FMR) for a two-bedroom apartment is \$904. In order to afford this level of rent and utilities, without paying more than 30 percent of income on housing, a household must earn \$3,012 monthly or \$36,146 annually. Assuming a 40-hour work week, 52 weeks per year, this level of income translates into a Housing Wage of \$17.38.

In Illinois, a minimum wage worker earns an hourly wage of \$8.25. In order to afford the FMR for a two-bedroom apartment, a minimum wage earner must work 84 hours per week, 52 weeks per year. Or, a household must include 2.1 minimum wage earner(s) working 40 hours per week year-round in order to make the two bedroom FMR affordable.

In Illinois, the estimated mean (average) wage for a renter is \$13.44 an hour. In order to afford the FMR for a two-bedroom apartment at this wage, a renter must work 52 hours per week, 52

weeks per year. Or, working 40 hours per week year-round, a household must include 1.3 worker(s) earning the mean renter wage in order to make the two-bedroom FMR affordable.

Monthly Supplemental Security Income (SSI) payments for an individual are \$674 in Illinois. If SSI represents an individual's sole source of income, \$202 in monthly rent is affordable, while the FMR for a one-bedroom is \$784.

A unit is considered affordable if it costs no more than 30 percent of the renter's income.

The report has data for metro and non-metro areas, and for individual counties. To view the report online and select the data you need, visit <http://www.nlihc.org/oor/oor2011> ■

No Wrong Door

(Continued from page 3)

transfer your case into their office

There are some types of benefits and offices that are not part of this process:

- ☉ City of Chicago GA: Individuals who receive and apply for these benefits will still need to use the Chicago GA office.
- ☉ Refugees in Chicago continue to need apply at the Special Units office in Uptown.
- ☉ Chicago SNAP Employment and Training persons need to continue to use the Garfield Park office.
- ☉ Cases served by Medical Field Operations will remain with this office (these are usually Nursing Home residents in Cook County).

- ☉ Cases served by HFS (Healthcare and Family Services) will continue to be served by them. (This includes All Kids Share, Rebate and Premium, Breast and Cervical Cancer, and Health Benefits for Workers with Disabilities).

If you are not sure which office you think is best, you go to www.dhs.state.il.us and use their office locator tool to find an office.

If you are helping a person who currently gets benefits and are not sure which office is assisting them, ask to see their medical card. On the card will be the case number usually showing a sequence of numbers like 93-030-00-xxxxxx or 94-107-00-xxxxxx. The second set of numbers identifies the office that has the benefit case (in my example 030 is DuPage County or 107 is Will County). Once you know the number

then go to <http://www.dhs.state.il.us/page.aspx?item=16954> and look for the number on the office list, and you will now know the office that is serving your client.

Since benefit amounts issued vary from county to county, if a person opts for the Office of Choice to be one where the benefits are lower, they will receive the benefit amount based on where they live not the office that provides services.

The DuPage Federation on Human Services Reform, a non-profit 501(c)(3) organization focused on advocacy and planning in DuPage County, Illinois and designer and trainer of [Making the Connection: A Guide to Accessing Public Benefits](#). The DuPage Federation is affiliated with Northern Illinois University, Center for Governmental Studies. Questions can be directed to knelson@dupagefederation.org ■

HOMELESS HEADLINES



ILLINOIS ASSOCIATION OF COMMUNITY ACTION AGENCIES
HOMELESS HEADLINES
3435 LIBERTY DRIVE
SPRINGFIELD, IL 62704

Headlines Directory

Center for Community Change

1536 U Street NW
Washington, DC 20009
Telephone: (202) 339-9300
<http://www.communitychange.org>

Center on Budget and Policy Priorities

820 First Street, NE, Suite 510
Washington, DC 20002
Ph: (202) 408-1080
Fax: (202) 408-1056
<http://www.cbpp.org>

Chicago Coalition for the Homeless

1325 S. Wabash, Suite 205
Chicago, IL 60605
Telephone: (312) 435-4548
Fax: (312) 435-0198
<http://www.enteract.com/~cch/index.htm>

Coalition of Citizens With Disabilities in Illinois

300 E. Monroe, Suite 100
Springfield, IL 62701
Telephone: (217) 522 7016
Fax: (217) 522-7024
TDD: (217) 522-7016
<http://www.ccdionline.org>

Corporation for Supportive Housing

205 W. Randolph, 23rd Floor
Chicago, IL 60601
Phone: (312) 332-6690
Fax: (312) 332-7040
Email: il@csh.org
www.csh.org

Food Research and Action Center

1875 Connecticut Avenue, NW, # 540
Washington, D.C. 20009
Telephone: (202) 986-2200
Fax: (202)986-2525
foodresearch@frac.org

Housing Action Illinois

11 E. Adams, Suite 1601
Chicago, IL 60603
Telephone: (312) 939-6074
Fax: (312) 939-6822
<http://housingactionil.org>

Housing Assistance Council

1025 Vermont Ave. NW, Suite 606
Washington, D.C. 20005
Telephone: (202) 842-8600
Fax: (202) 347-3441
<http://www.ruralhome.org>

Illinois Association of Community Action Agencies

3435 Liberty Drive
Springfield, IL 62704
Telephone: (217) 789-0125
Fax: (217) 789-0139
<http://www.iaacanet.org>

Illinois Coalition Against Domestic Violence

801 S. 11th
Springfield, IL 62703
Telephone: (217) 789-2830
Fax: (217) 789-1939
<http://www.ilcadv.org>

Illinois Department of Commerce and Economic Opportunity

620 E. Adams, CIPS-3
Springfield, IL 62701
Telephone (217) 785-6142
Fax: (217-782-1206
<http://www.commerce.state.il.us/>

Illinois Department of Human Services

Homeless Services and Supportive
Housing
400 W. Lawrence, 2C
Springfield, IL 62762
Telephone: (217) 782-1317
Fax: (217) 524-5800
<http://www.dhs.state.il.us>

Illinois Food Bank Association

P.O. Box 8293
Springfield, IL 62791
(217)522-4022
E-mail: cifbank@aol.com

Illinois Housing Development Authority

401 N. Michigan Ave., Suite 900
Chicago, IL 60611
Telephone: (312) 836-5200
Fax: (312) 836-5286
TDD: (312) 836-5222
<http://www.ihda.org/>

National Alliance to End Homelessness

1518 K Street, NW, Suite 410
Washington, D.C. 20005
Telephone: (202) 638-1526
Fax: (202) 638-4664
E-mail: naeh@naeh.org
<http://www.endhomelessness.org/>

National Coalition for Homeless Veterans

333 1/2 Pennsylvania Avenue, SE
Washington, D.C. 20003-1148
Telephone: (202) 546-1969
Fax: (202) 546-2063
E-mail: nchv@nchv.org
<http://www.nchv.org/home.html>

National Coalition for the Homeless

2201 "P" St., NW
Washington, DC 20037-1033
Phone: (202) 462-4822 x234
Fax: (202) 462-4823
Email: info@nationalhomeless.org

National Community Reinvestment Coalition

727 15th St., NW, #900
Washington, D.C. 20005
Telephone: (202) 628-8866
Fax: (202) 628-9800

National Law Center on Homelessness & Poverty

918 F Street NW #412
Washington DC 20004
Telephone: (202) 638-2535
Fax (202) 628-2737

National Low-Income Housing Coalition

& National Low Income Housing
Information Service
727 15th St NW, 6th Floor
Washington, D.C. 20005
Telephone: (202) 662-1530
Fax: (202) 393-1973
E-mail: info@nlihc.org
<http://www.nlihc.org>

National Rural Housing Coalition

601 Pennsylvania Avenue, NW
Suite 850
Washington, D.C. 20004
Telephone: (202) 393-5229
Fax: (202) 393-3034
<http://www.nrhweb.org>

Rural Development

2118 W. Park Ct, Suite A
Champaign IL 61821
Telephone: (217)403-6222
Fax: (217)403-6231

Southern Illinois Coalition for the Homeless

P.O. Box 955
801 N. Market
Marion, IL 62959
Telephone: (618) 993-0094
Fax: (618) 993-4013

Supportive Housing Providers Association

212 E. Ohio Street, 5th Floor
Chicago, IL 60611
Telephone: 773-935-4663, ext.123
supportivehsg@aol.com

U.S. Department of Housing and Urban Development

Office of Community Planning and
Development
77 W. Jackson 24th Floor
Chicago, Illinois 60604-3507
Telephone: (312) 353-1696
Fax: (312) 353-5417
<http://www.hud.gov/local/chi/chihome.html>